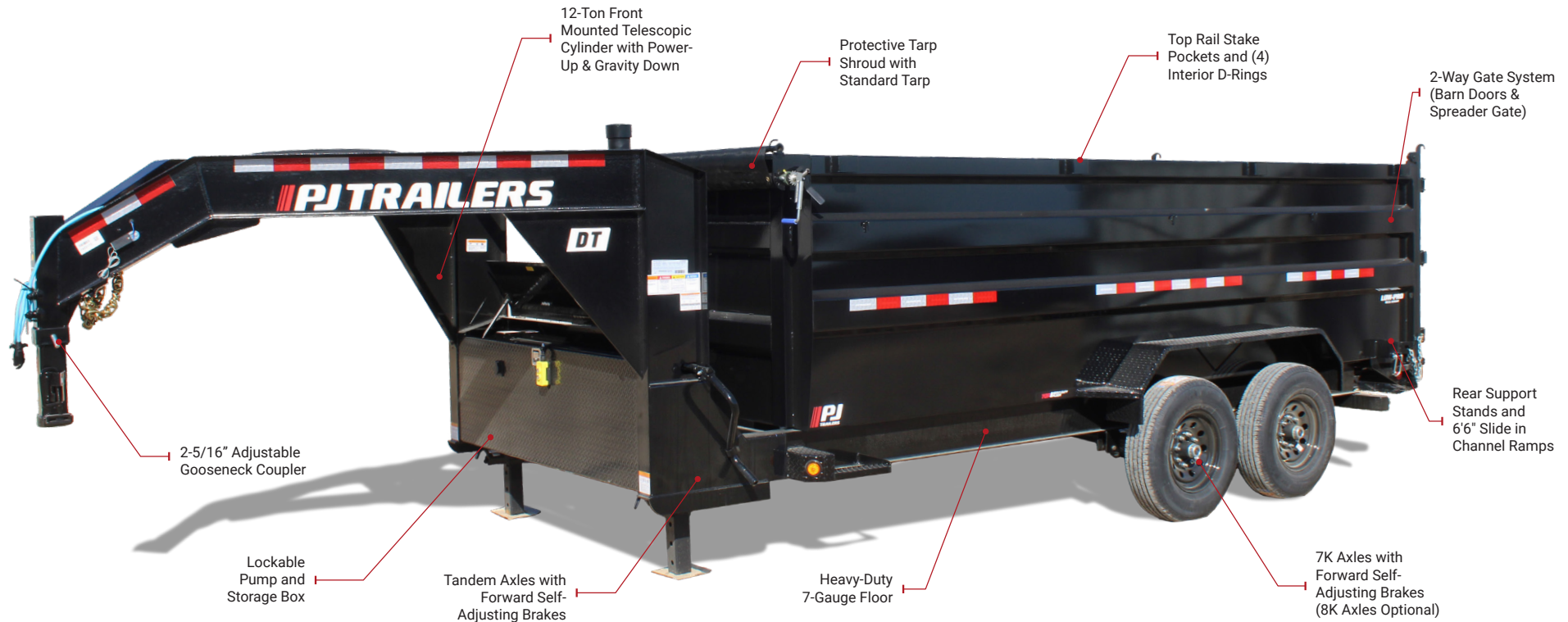


DT GOOSENECK TELESCOPIC DUMP

STANDARD CONFIGURATION SPECS
 THESE ARE THE DEFAULT SPECS THAT ARE INCLUDED IN THE BASE CONFIGURATION OF THIS MODEL.

DECK WIDTH: 83"	DECK HEIGHT: 28" (24" Optional)	CARGO CAPACITY: 7.2 - 16.4yd ³	Dump Angle: 40°
LENGTHS: 14', 16'	COUPLERS: Gooseneck	AXLES: Tandem (2 x 7,000 lb. or 8,000 lb.)	Choose the optional 7,000 lb. Drop Axles for an extra-low 24" bed height.
GVWR: 15,680 - 18,000 lbs.	LOAD CAPACITY: 9,750 - 11,920 lbs.	DUMP SIDES HEIGHT: 24" or 48"	



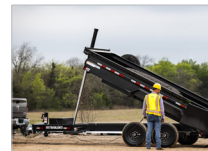
The Monster Step provides enhanced traction for muddy days as you are tarping or checking on your load.

MONSTER STEP



Our UniWall Steel Technology uses form-rolled steel to add structural integrity, reduce corrosion-vulnerable seams, and lower the trailer weight to increase load capacity.

UNIWALL STEEL TECHNOLOGY



Featuring a 3-stage telescopic cylinder mounted on the tongue, you will have a smooth lift experience from start to finish while getting more dump cycles per charged battery.

12-TON TELESCOPIC CYLINDER



Our 3 and 4' high side options are great for hauling bulky loads. When using these options with the included rollup tarp kit, you can safely transport loads to and from job sites.

3' & 4' HIGH SIDES OPTIONS

PJTRAILERS

VISIT PJTRAILERS.COM FOR A COMPLETE LIST OF TRAILER OPTIONS.