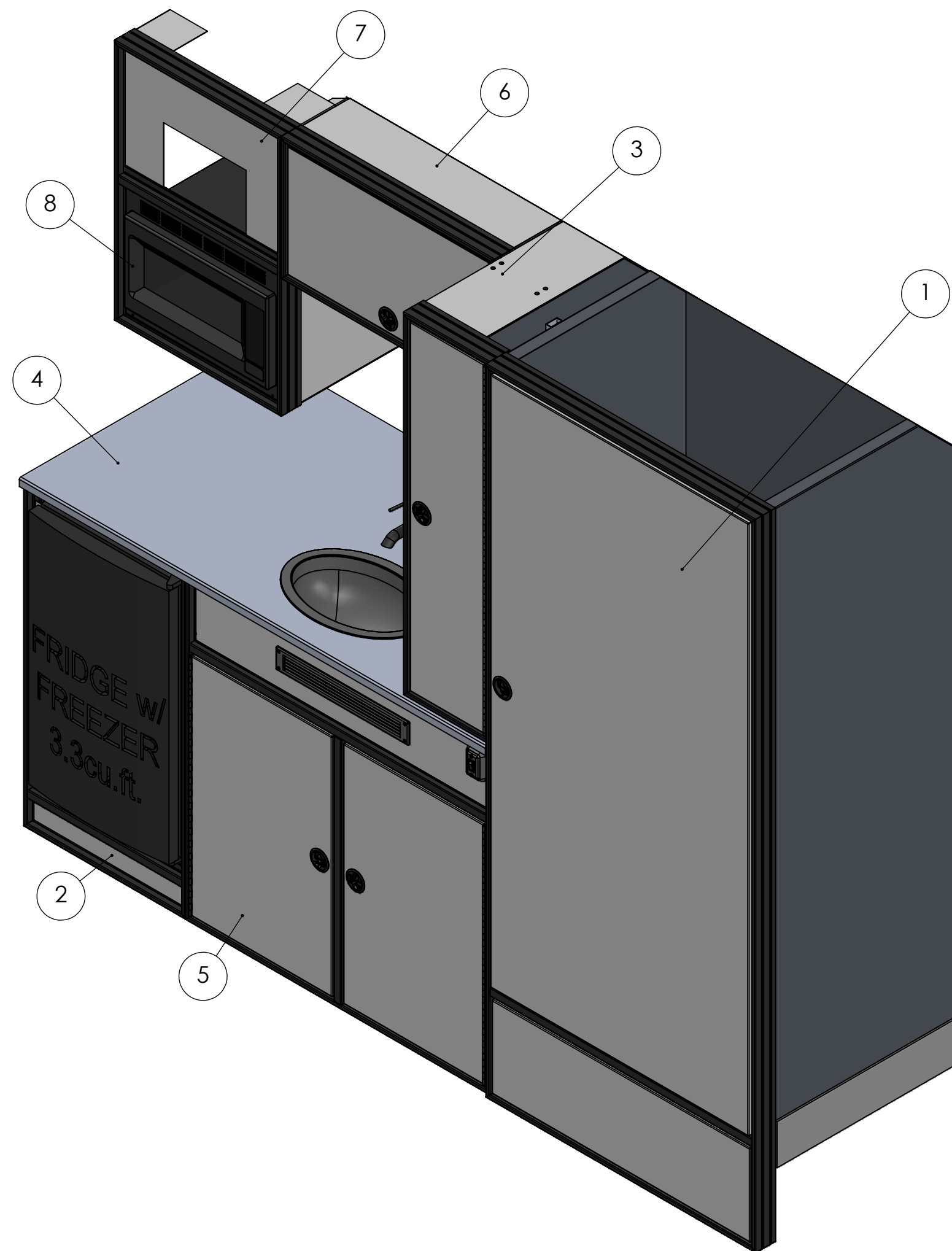
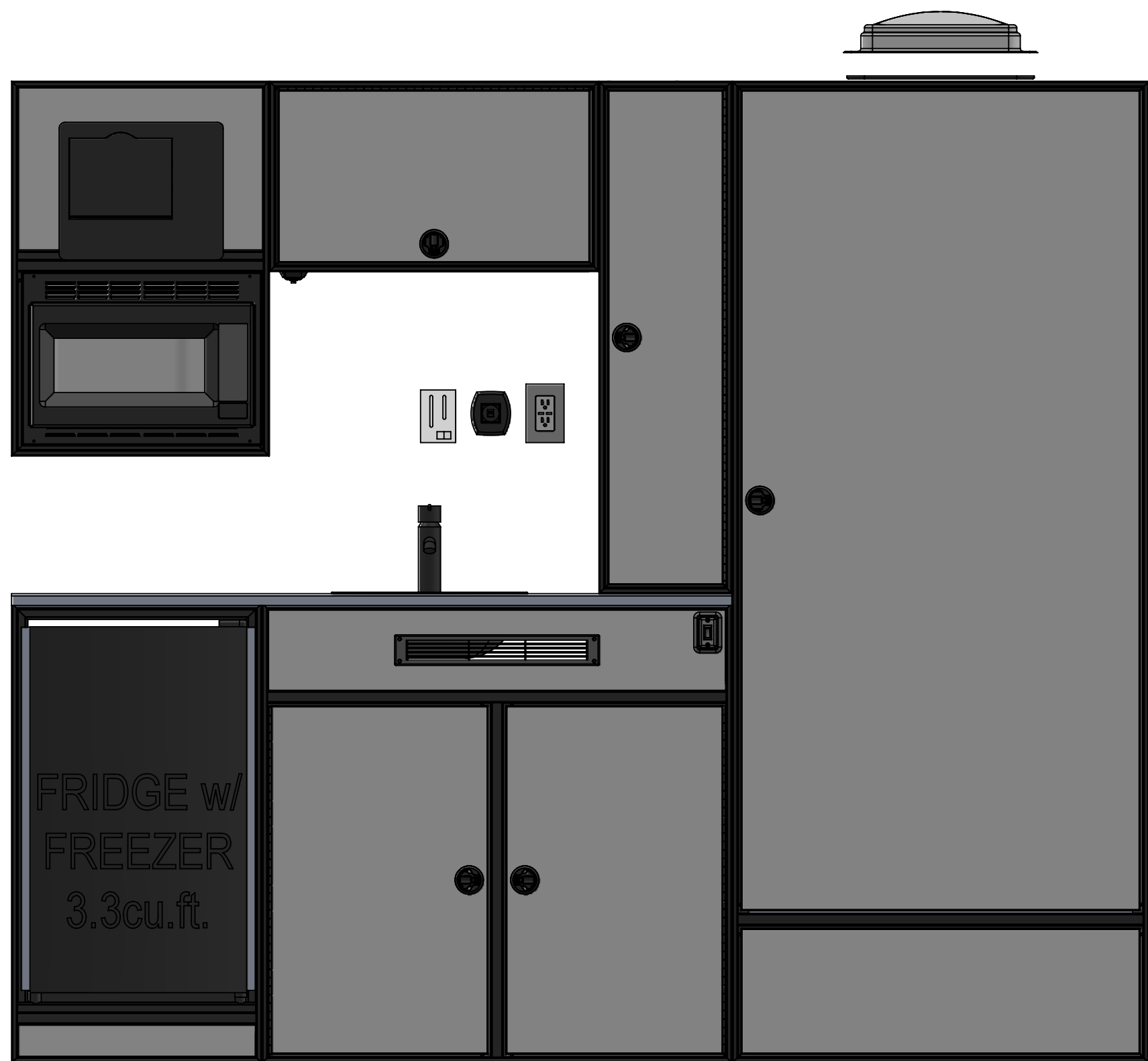


NOTE: SEE MASTER PRINT/HARNESS PRINT FOR ELECTRICAL PACKAGE NEEDS

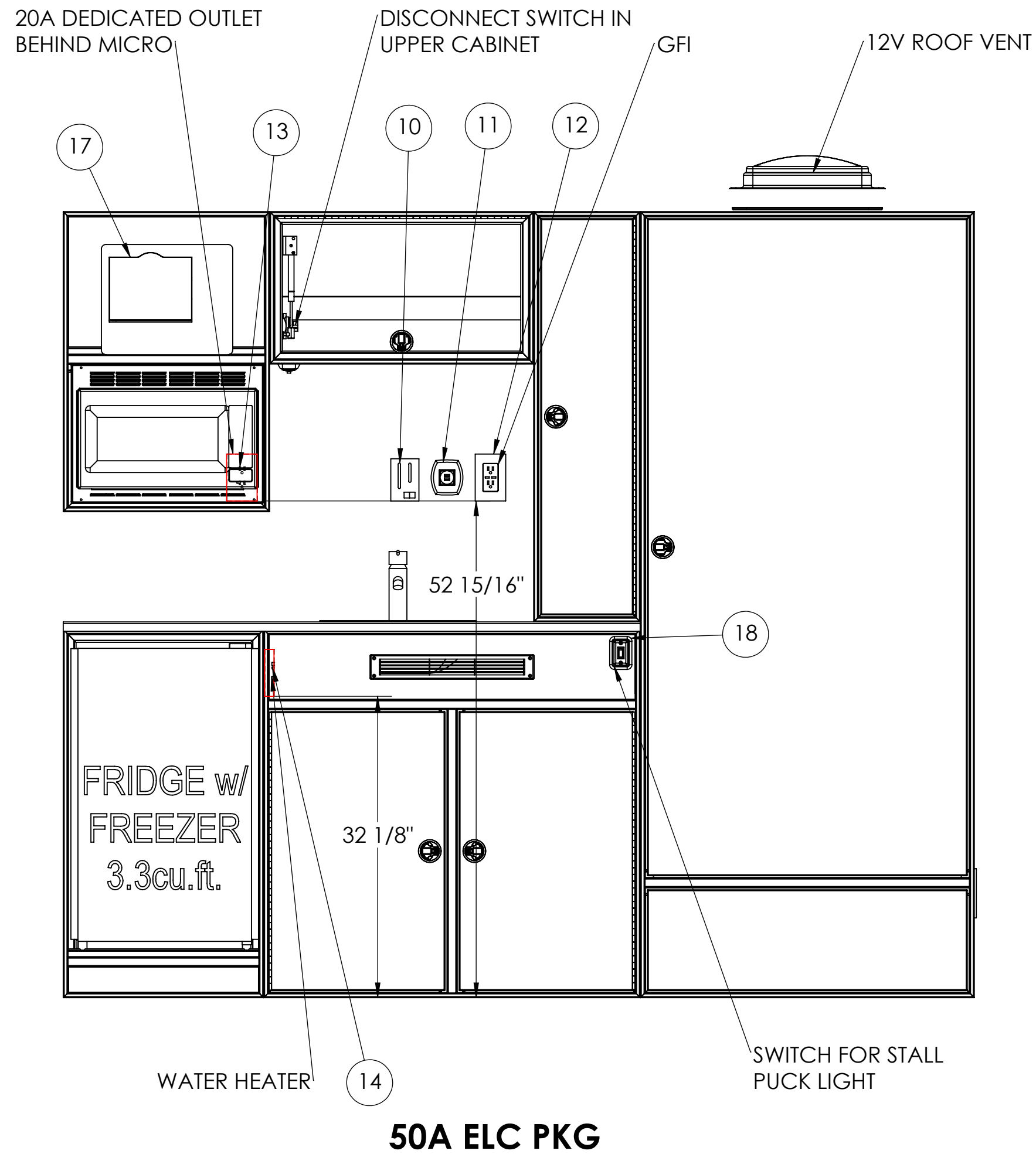


BOM TABLE			
#	ACU PN	COMPONENT NAME	QTY.
1	0050900	CABINET, STALL, 36.00W X 84.00H X 30.50D, LH, TP, SHOWER, 850	1
2	0050903	CABINET, BASE, 21.63W X 39.25H X 30.00D, LH, RH, FRIDGE, SHOWER, 850	1
3	0050905	CABINET, DRESSER, 11.38W X 43.56H X 30.00D, LH, RH, TP, SHOWER, 850	1
4	0050814	COUNTERTOP, AL, W-SINK, 61.16L X 30.50D X 0.75H, FF CBNT PKG 10	1
5	0050902	CABINET, BASE, 39.50W X 39.25H X 30.00D, LH, RH, SINK, SHOWER, 850	1
6	0050904	CABINET, UPPER, 27.50W X 16.25H X 18.00D, LH, RH, TP, SHOWER, 850	1
7	0050907	CABINET, UPPER, 22.25W X 32.00H X 18.00D, RH, MICRO, SHOWER, 850	1
8	0048738	COMPONENTS, CAB PKG 9	1

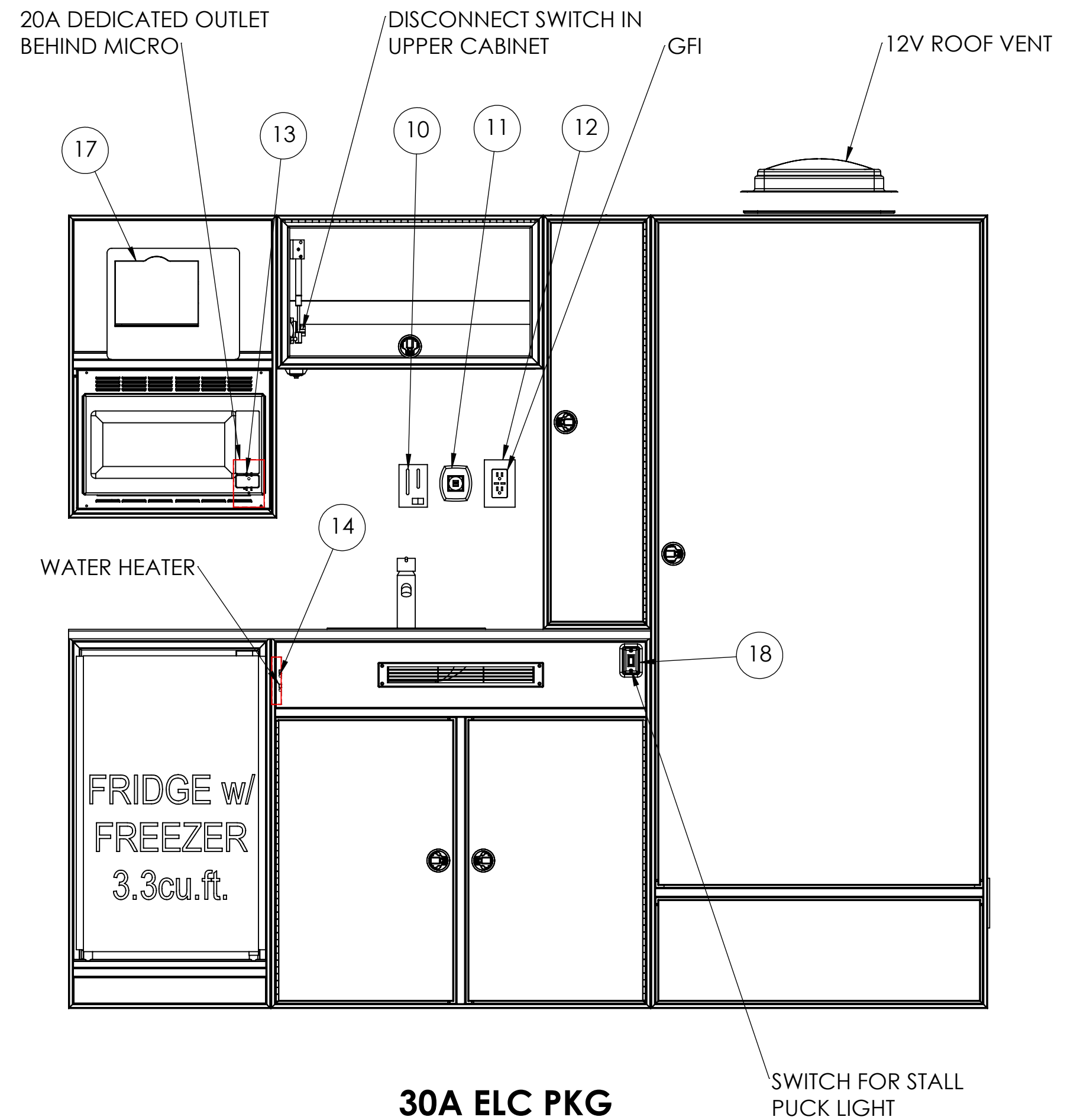
REVISION TABLE			
REV.	DESCRIPTION	DATE	DONE BY

FOR FRAME	DIMENSION TOLERANCES	ALL DIMENSIONS ARE NOMINAL UNLESS CRITICAL DIMENSIONS ARE SPECIFICALLY NOTED
EXTERIOR	STANDARD	
INTERIOR	+1/16", 1.0°	
STRUCTURAL	CRITICAL	
		+1/32", 0.5°

TITLE: **FF CABINET PKG 10, 850, RM_50_B8570**
 MATERIAL: (THICKNESS - TYPE - ALLOY - SIZE)
 WEIGHT: 1053.45 LBS
 ACUMATICA PN: **0050895**
 DRAWN BY: GB
 REVISION: A
 DATE: 03/20/26
 SCALE: 1:16
 PROPRIETARY AND CONFIDENTIAL: THE INFORMATION CONTAINED IN THIS DRAWING IS THE SOLE PROPERTY OF ATC TRAILERS. ANY REPRODUCTION IN PART OR AS A WHOLE WITHOUT THE WRITTEN PERMISSION OF ATC TRAILERS IS PROHIBITED.



50A ELC PKG



30A ELC PKG

BOM TABLE				
#	ACU PN	COMPONENT NAME	50A QTY	30A QTY.
10		PANEL - 2 TANK MONITOR	1	1
11	0015985	SIGMSW 5115-A0268 BLACK DUAL USB PORT OVAL CHARGING CENTER	1	1
12		120V 15A INTERIOR-GFI	1	1
13		120V 20A INT-DEDICATED	1	1
14		120V 15A INTERIOR	1	1
15	0013598	Battery Disconnect, 701B, 300A, Marinco	1	1
16		30 AMP WITH CONVERTER	-	1
17	0016859	50A Intellipower Panel, 60A Converter	1	-
18	0013521	SWITCH, 12V, 1 GANG, BLACK	1	1

FOR FRAME	DIMENSION TOLERANCES	ALL DIMENSIONS ARE NOMINAL UNLESS CRITICAL DIMENSIONS ARE SPECIFICALLY NOTED
EXTERIOR	STANDARD	
INTERIOR	+1/16", 1.0"	
STRUCTURAL	+1/32", 0.5"	

TITLE: FF CABINET PKG 10, 850, RM_50_B8570
 MATERIAL: (THICKNESS - TYPE - ALLOY - SIZE)



PROPRIETARY AND CONFIDENTIAL: THE INFORMATION CONTAINED IN THIS DRAWING IS THE SOLE PROPERTY OF ATC TRAILERS. ANY REPRODUCTION IN PART OR AS A WHOLE WITHOUT THE WRITTEN PERMISSION OF ATC TRAILERS IS PROHIBITED.

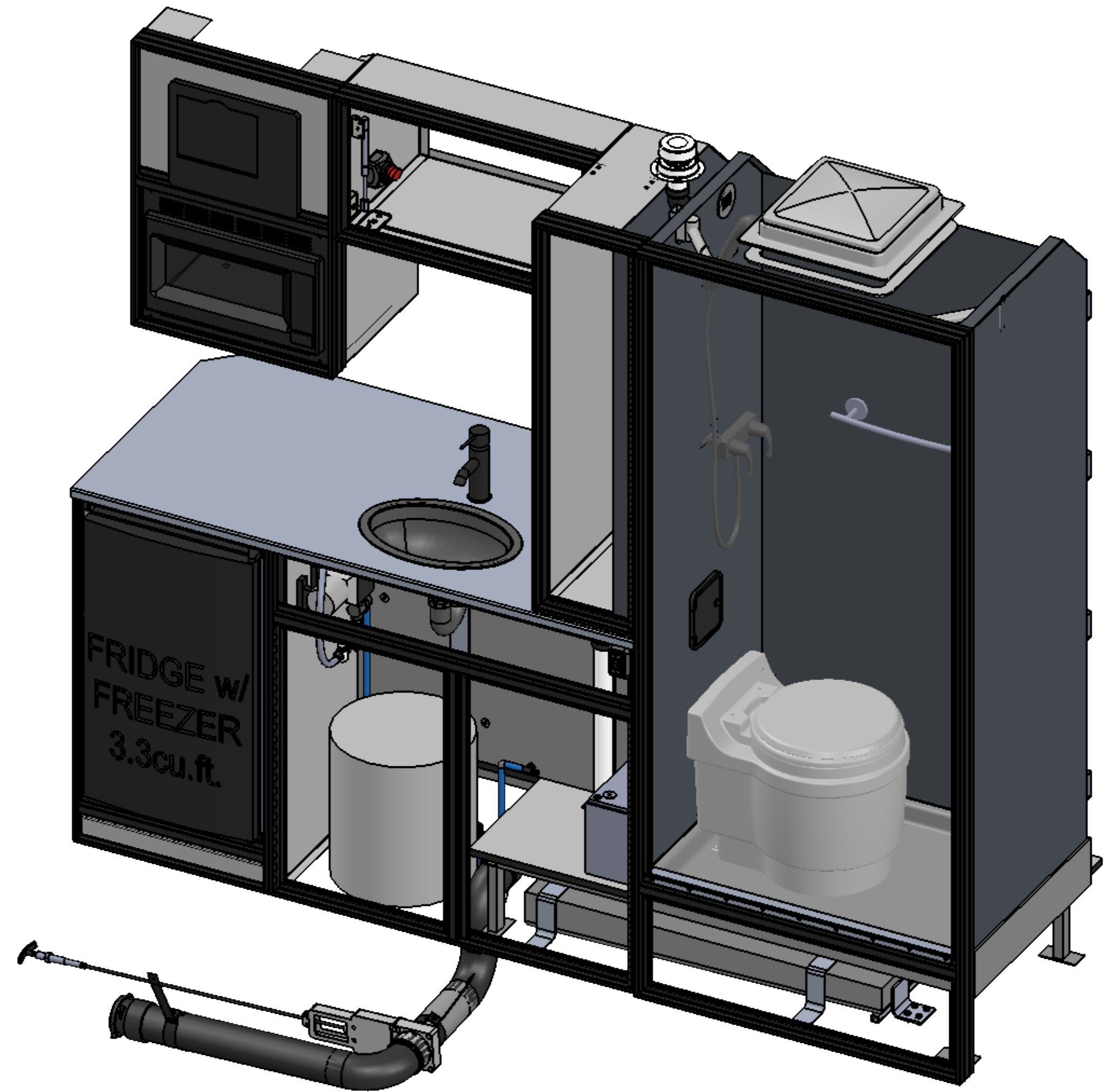
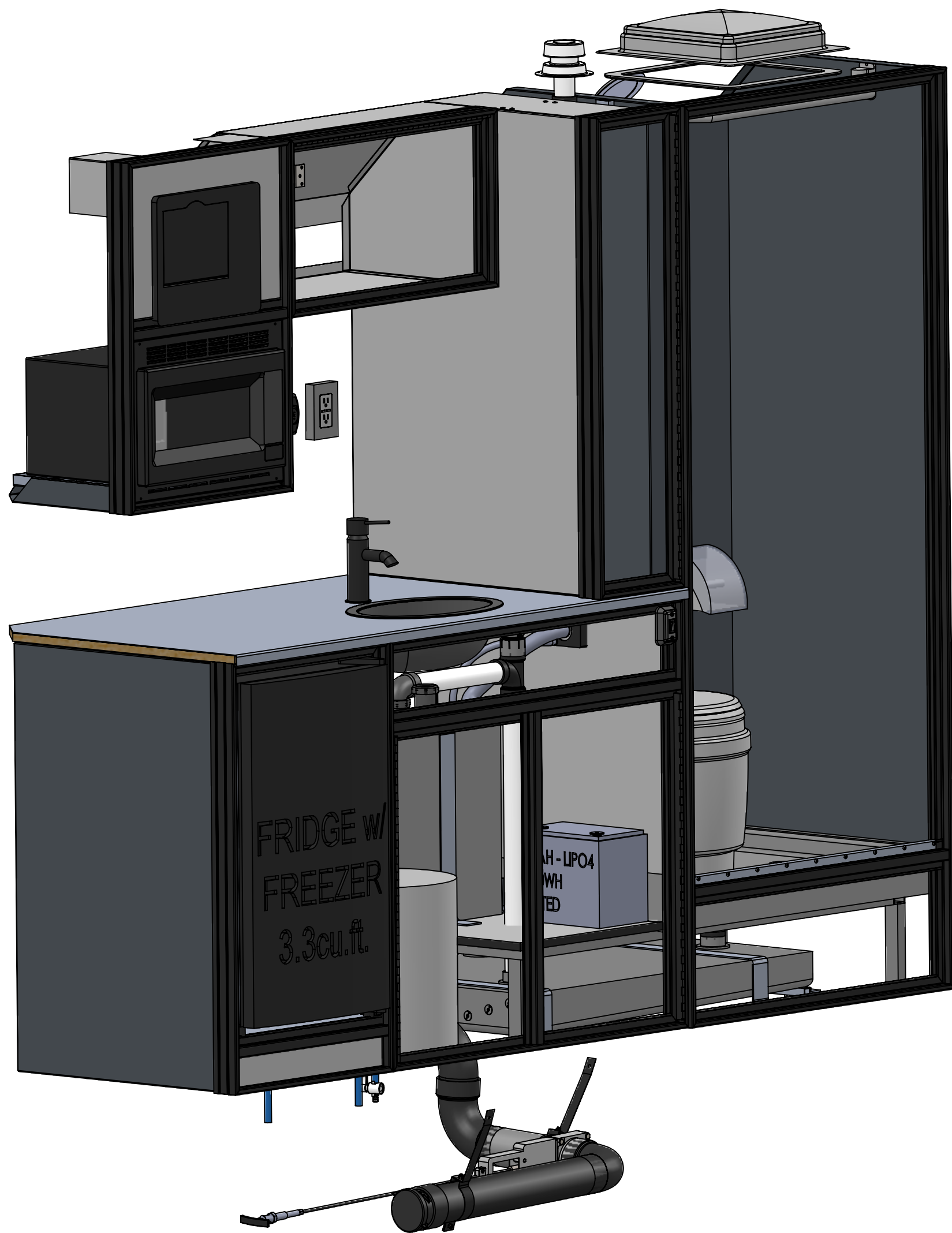
ACUMATICA PN: 0050895
 DRAWN BY: GB
 REVISION: A
 DATE: 03/20/26
 SCALE: 1:16

WEIGHT: 1053.45 LBS

FILE NAME: 0050895 - FF CABINET PKG 10, 850, RM_50_B8570

SHEET 2 OF 5

REVISION TABLE			
REV.	DESCRIPTION	DATE	DONE BY



REVISION TABLE			
REV.	DESCRIPTION	DATE	DONE BY

FOR FRAME	DIMENSION TOLERANCES	ALL DIMENSIONS ARE NOMINAL UNLESS CRITICAL DIMENSIONS ARE SPECIFICALLY NOTED
EXTERIOR	STANDARD + .1/16", 1.0°	
INTERIOR	CRITICAL + .1/32", 0.5°	
STRUCTURAL		

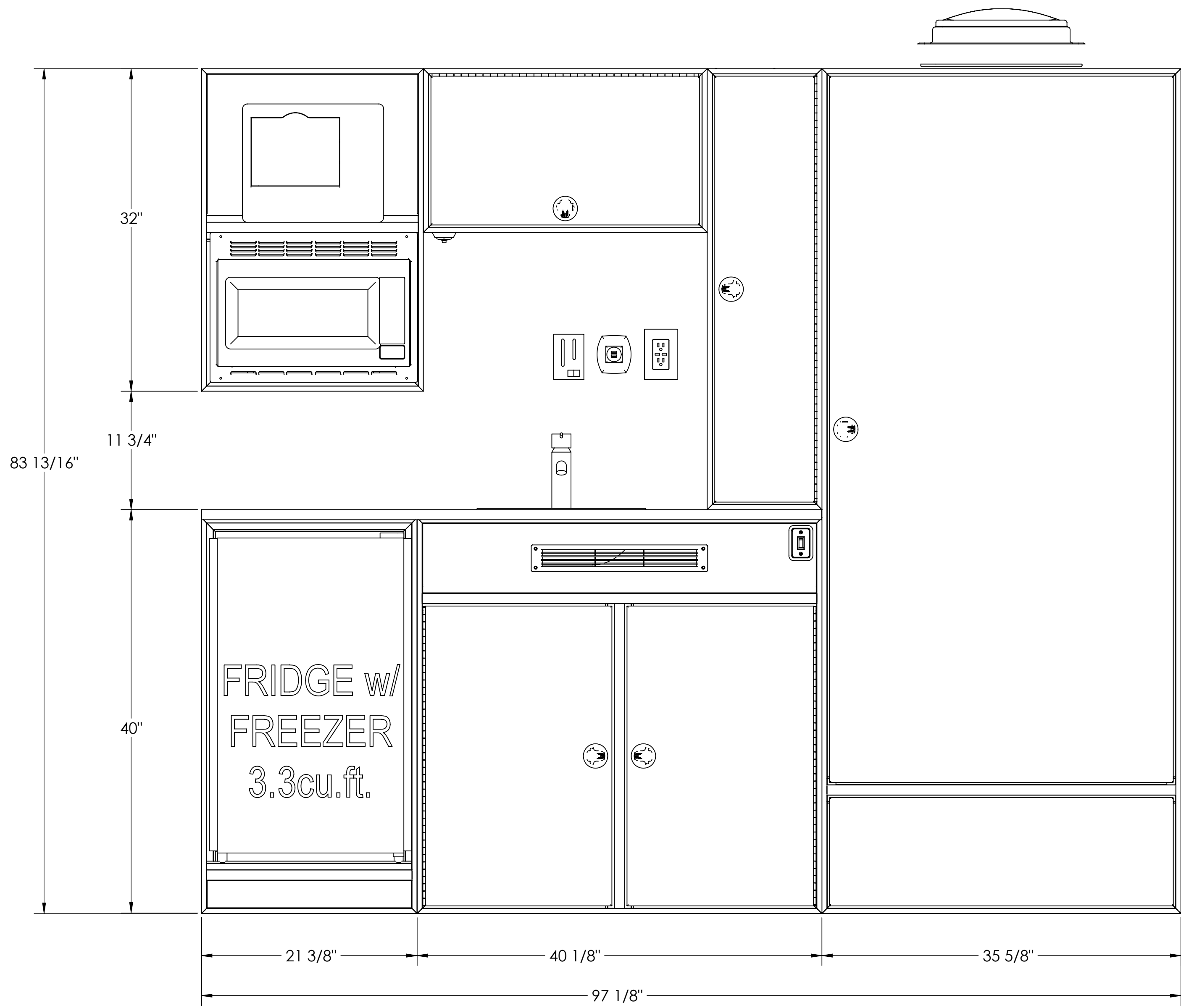
TITLE: FF CABINET PKG 10, 850, RM_50 B8570
 MATERIAL: (THICKNESS - TYPE - ALLOY - SIZE)

ACUMATICA PN: **0050895**
 DRAWN BY: GB
 REVISION: A
 DATE: 03/20/26
 SCALE: 1:16

WEIGHT: 1053.45 LBS

FILE NAME: 0050895 - FF CABINET PKG 10, 850, RM_50_B8570

PROPRIETARY AND CONFIDENTIAL: THE INFORMATION CONTAINED IN THIS DRAWING IS THE SOLE PROPERTY OF ATC TRAILERS. ANY REPRODUCTION IN PART OR AS A WHOLE WITHOUT THE WRITTEN PERMISSION OF ATC TRAILERS IS PROHIBITED.



FOR FRAME	DIMENSION TOLERANCES	ALL DIMENSIONS ARE NOMINAL UNLESS CRITICAL DIMENSIONS ARE SPECIFICALLY NOTED
EXTERIOR	STANDARD + 1/16", 1.0°	
INTERIOR	CRITICAL + 1/32", 0.5°	
STRUCTURAL		

TITLE: FF CABINET PKG 10, 850, RM_50_B8570
 MATERIAL: (THICKNESS - TYPE - ALLOY - SIZE)

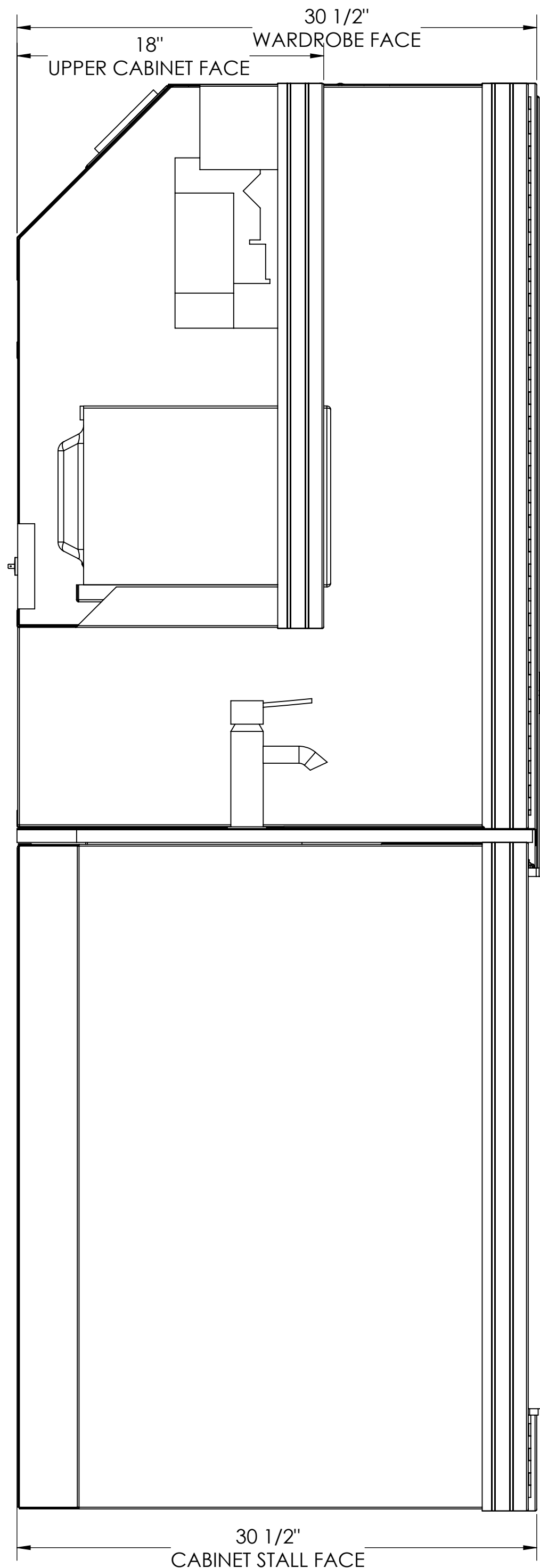
WEIGHT: 1053.45 LBS

ACUMATICA PN: 0050895

PROPRIETARY AND CONFIDENTIAL: THE INFORMATION CONTAINED IN THIS DRAWING IS THE SOLE PROPERTY OF ATC TRAILERS. ANY REPRODUCTION IN PART OR AS A WHOLE WITHOUT THE WRITTEN PERMISSION OF ATC TRAILERS IS PROHIBITED.



DRAWN BY: GB
 REVISION: A
 DATE: 03/20/26
 SCALE: 1:16



FOR FRAME	DIMENSION TOLERANCES	ALL DIMENSIONS ARE NOMINAL UNLESS CRITICAL DIMENSIONS ARE SPECIFICALLY NOTED
EXTERIOR	STANDARD + .1/16", 1.0°	
INTERIOR	CRITICAL	
STRUCTURAL	+ .1/32", 0.5°	

TITLE: **FF CABINET PKG 10, 850, RM_50_B8570**
 MATERIAL: (THICKNESS - TYPE - ALLOY - SIZE)
 WEIGHT: 1053.45 LBS



PROPRIETARY AND CONFIDENTIAL: THE INFORMATION CONTAINED IN THIS DRAWING IS THE SOLE PROPERTY OF ATC TRAILERS. ANY REPRODUCTION IN PART OR AS A WHOLE WITHOUT THE WRITTEN PERMISSION OF ATC TRAILERS IS PROHIBITED.

ACUMATICA PN: **0050895**
 DRAWN BY: **GB** REVISION: **A**
 DATE: **03/20/26**
 SCALE: 1:16